

Sheet: Global

File: global.sch

Sheet: Power

File: power.sch

Sheet: Button Matrix

File: button-matrix.sch

Sheet: Led Matrix

File: led-matrix.sch

Sheet: MCU

File: mcu.sch

Sheet: Jacks

File: jacks.sch

Sheet: DAC

File: dac.sch

cc-by-nc-sa

**westlicht**

Sheet: /

File: sequencer.sch

**Title: PER/FORMER eurorack sequencer**

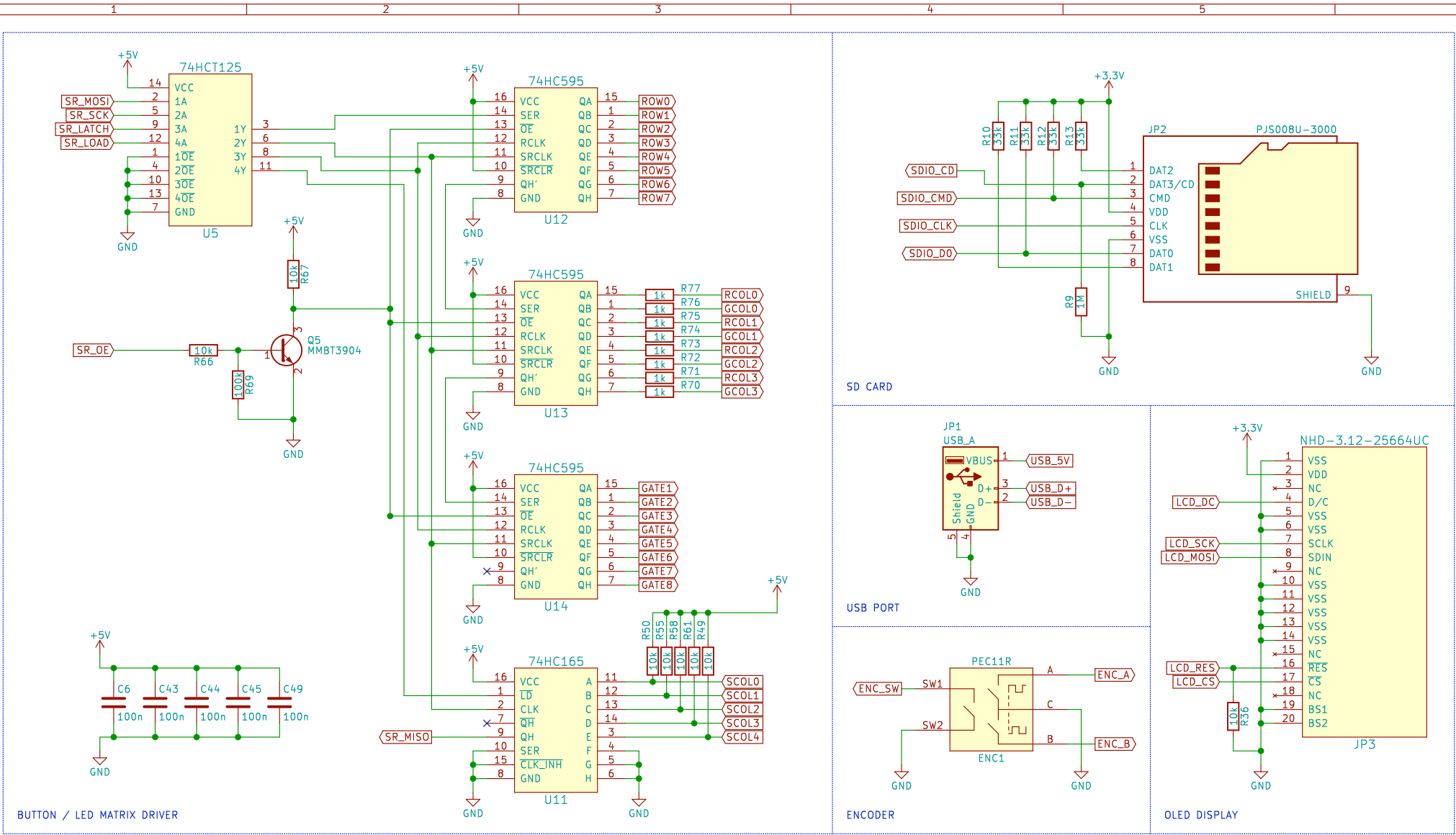
Size: A4

Date: 2018-10-09

Rev: 1.0

KiCad E.D.A. kicad 4.0.7

Id: 1/8



cc-by-nc-sa

westlicht

Sheet: /Global/

File: global.sch

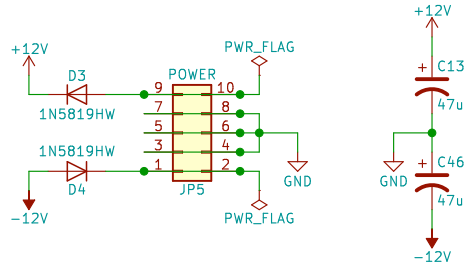
**Title: PER/FORMER eurorack sequencer**

Size: A4 Date: 2018-10-09

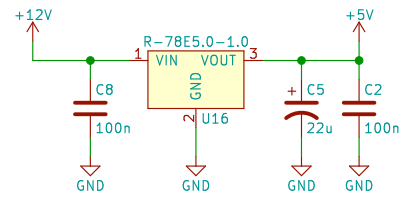
KiCad E.D.A. kicad 4.0.7

Rev: 1.0

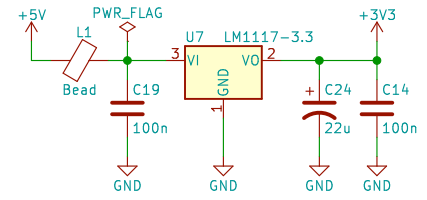
Id: 2/8



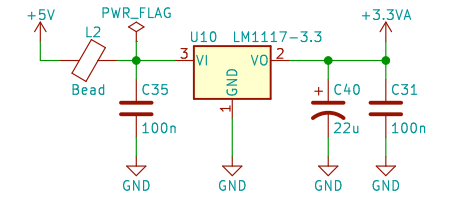
POWER INLET Reverse protection and filtering for +12V/-12V rails



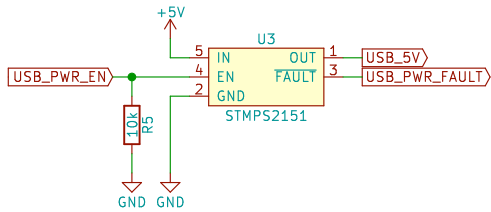
5V SUPPLY 5V 1A DC-DC step down converter



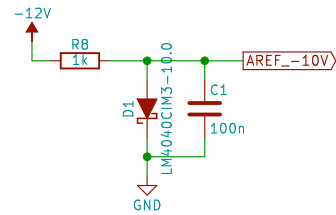
3.3V SUPPLY (DIGITAL)



3.3V SUPPLY (ANALOG)



5V SUPPLY (USB)



-10V REFERENCE

cc-by-nc-sa

westlicht

Sheet: /Power/

File: power.sch

**Title: PER/FORMER eurorack sequencer**

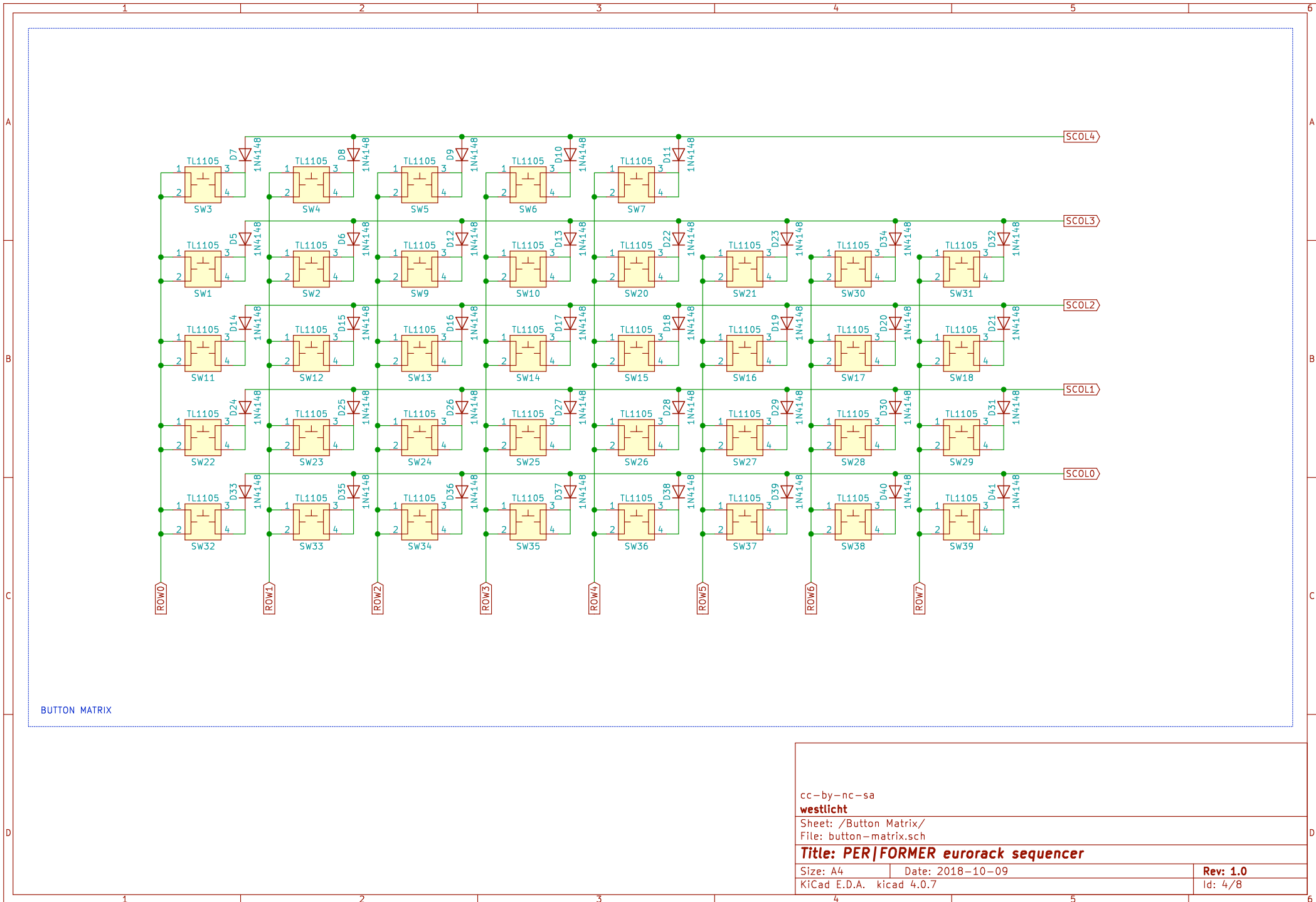
Size: A4

Date: 2018-10-09

Rev: 1.0

KiCad E.D.A. kicad 4.0.7

Id: 3/8



BUTTON MATRIX

cc-by-nc-sa

westlicht

Sheet: /Button Matrix/

File: button-matrix.sch

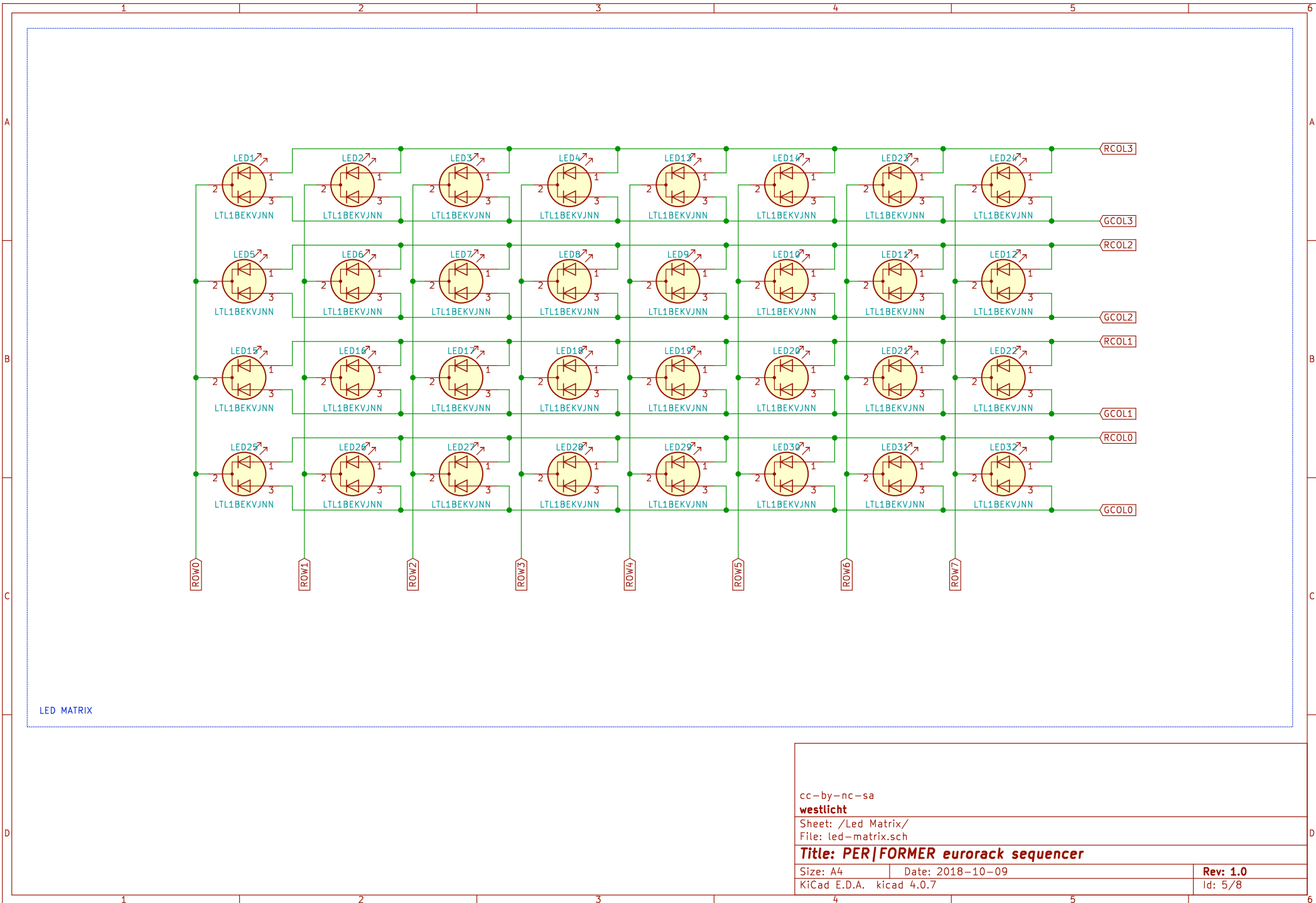
Title: PER/FORMER eurorack sequencer

Size: A4 Date: 2018-10-09

KiCad E.D.A. kicad 4.0.7

Rev: 1.0

Id: 4/8



cc-by-nc-sa

**westlicht**

Sheet: /Led Matrix/

File: led-matrix.sch

**Title: PER/FORMER eurorack sequencer**

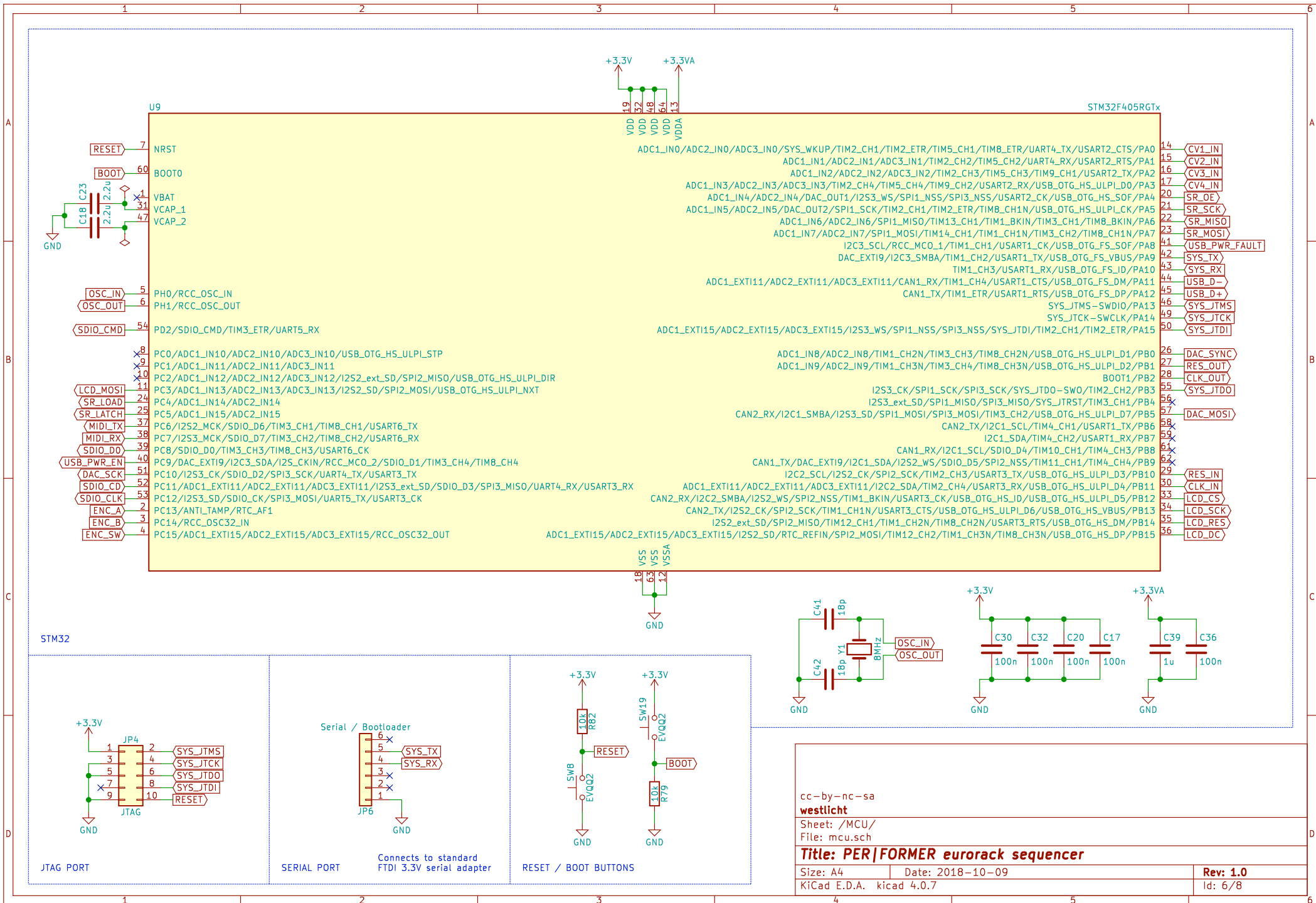
Size: A4

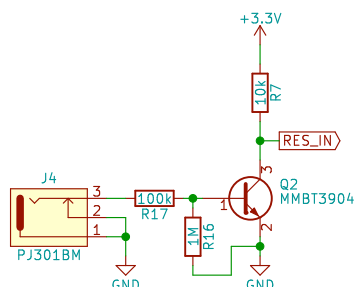
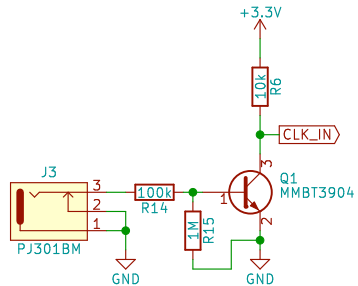
Date: 2018-10-09

**Rev: 1.0**

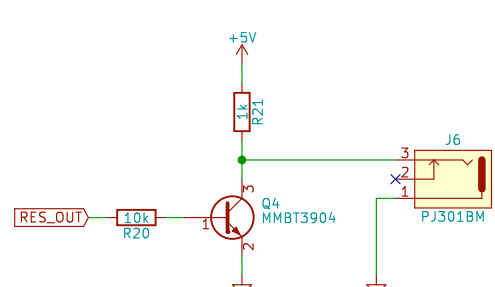
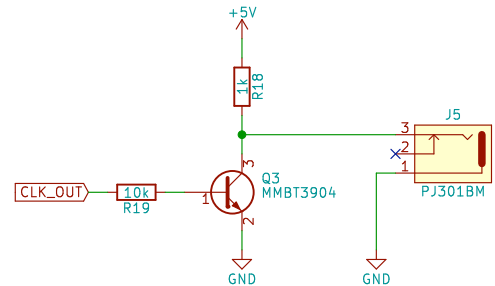
KiCad E.D.A. kicad 4.0.7

Id: 5/8

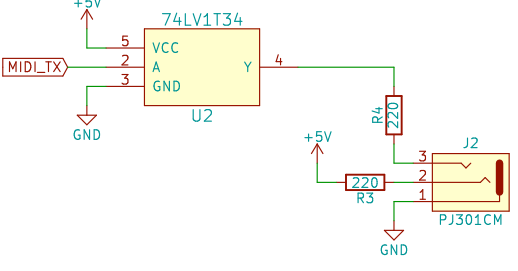
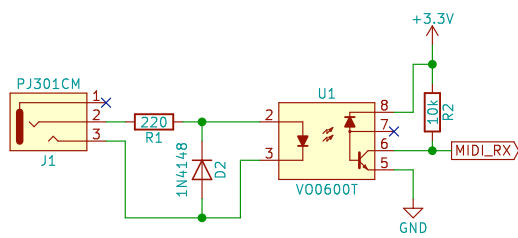




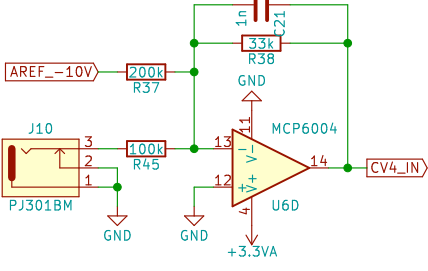
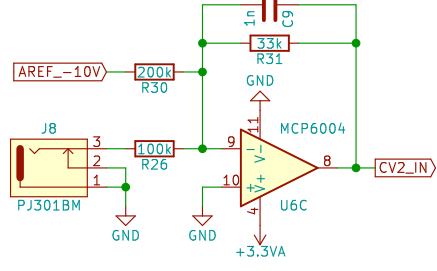
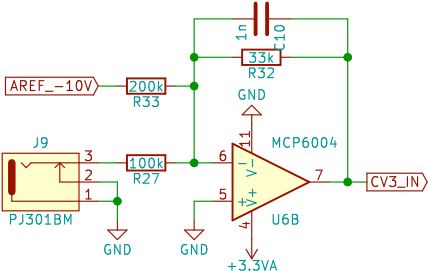
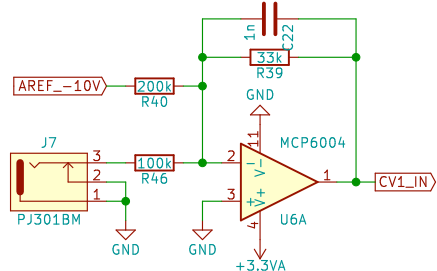
CLOCK INPUTS High signal threshold: 0.7V



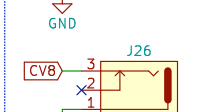
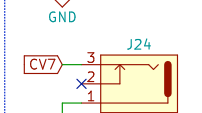
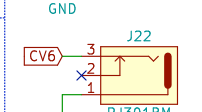
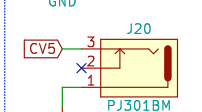
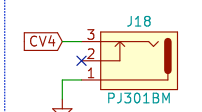
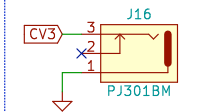
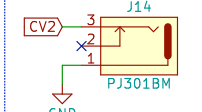
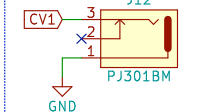
CLOCK OUTPUTS High level: 5V



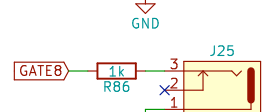
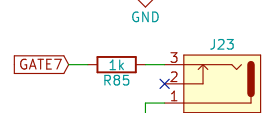
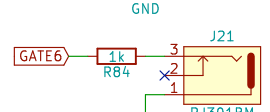
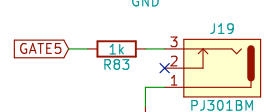
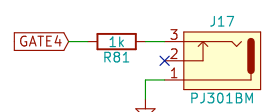
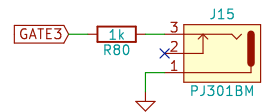
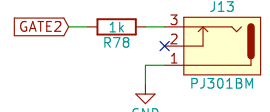
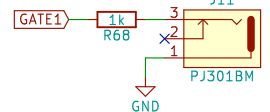
MIDI INPUT/OUTPUT



CV INPUTS Inverting rail-to-rail opamp configuration, Input range [-5V,5V], Output range [3.3V,0V]



CV OUTPUTS



GATE OUTPUTS

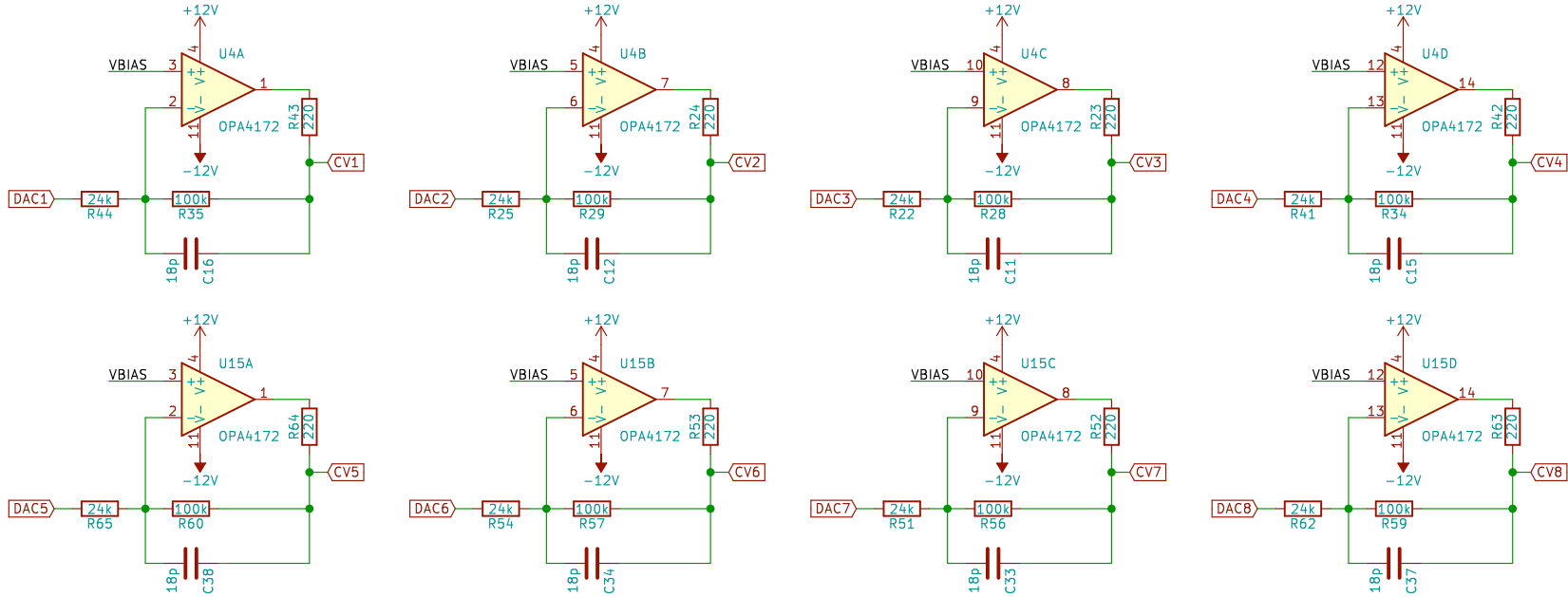
cc-by-nc-sa  
westlicht

Sheet: /Jacks/  
File: jacks.sch

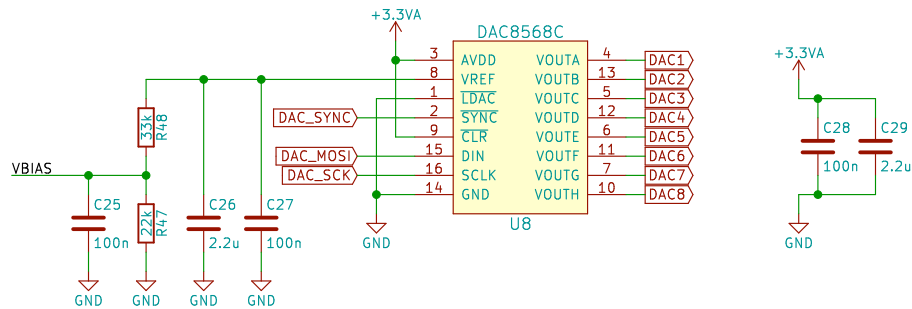
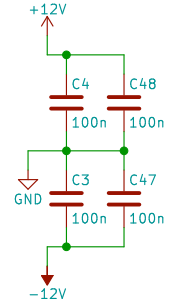
Title: PER/FORMER eurorack sequencer

Size: A4 Date: 2018-10-09  
KiCad E.D.A. kicad 4.0.7

Rev: 1.0  
Id: 7/8



CV OUTPUT BUFFERS Inverting opamp configuration, Input range [0V,3.3V], Output range [5.17V,-5.25V]



DIGITAL TO ANALOG CONVERTER

cc-by-nc-sa

westlicht

Sheet: /DAC/

File: dac.sch

Title: PER|FORMER eurorack sequencer

Size: A4 Date: 2018-10-09

KiCad E.D.A. kicad 4.0.7

Rev: 1.0

Id: 8/8