

Tech Tip of the Week

Outlook Tip # 3

Emailing students with ease. Wouldn't it be nice if you could email students quickly and easily...and not have a clogged inbox. In part 1 of this 2 part series I'll discuss creating distributions lists for each of your classes so that emailing students becomes a breeze. Part 2, next week, will discuss how to manage all of those emails that you are getting from students.

Volume 7, December 3, 2012

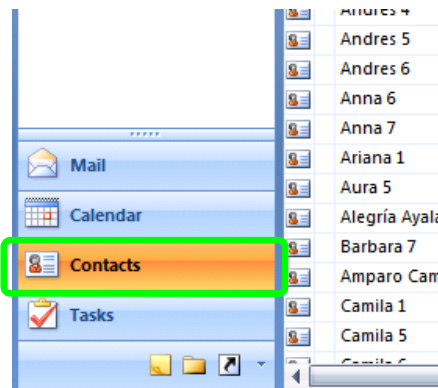
Questions or comments?

Email us at:

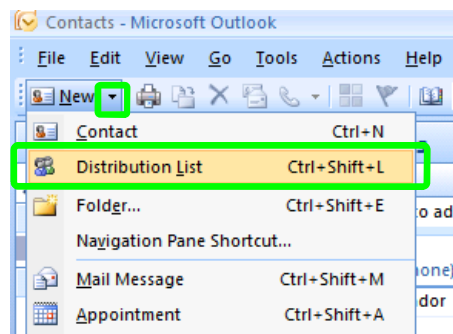
pdunlap@colegiomenor.edu.ec

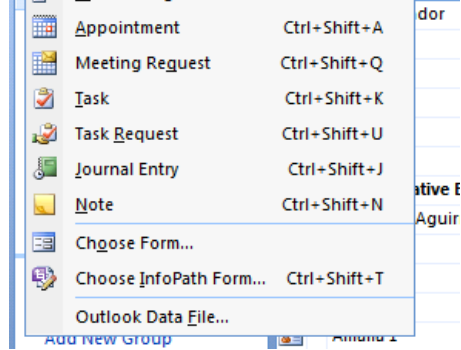
Powerschool allows you to email students and parents. If you are enjoying that, get on with your bad self. But if you like to be able to look back at sent emails and to have students reply to emails you send, then you need to use MS Outlook. This tutorial will take you through the process of setting up your own distribution lists (also known as ListServes) so that you can contact your students by class.

In MS Outlook, select the Contacts tab.

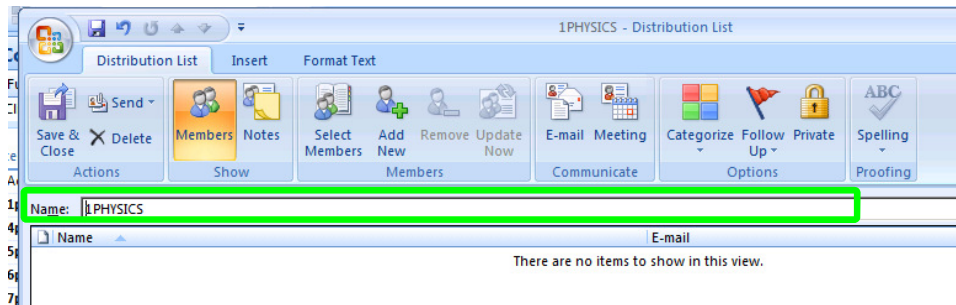


Now select the drop down menu under New. Select Distribution List.

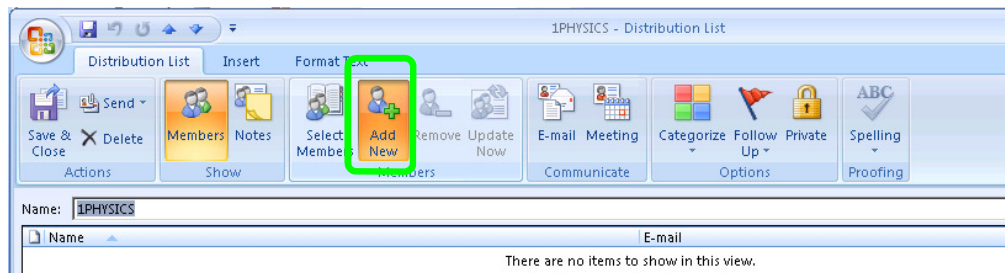




Name your Distribution List. *I recommend that you start the name with the number representing the class period. This will bring your lists to the top of your contacts list.*

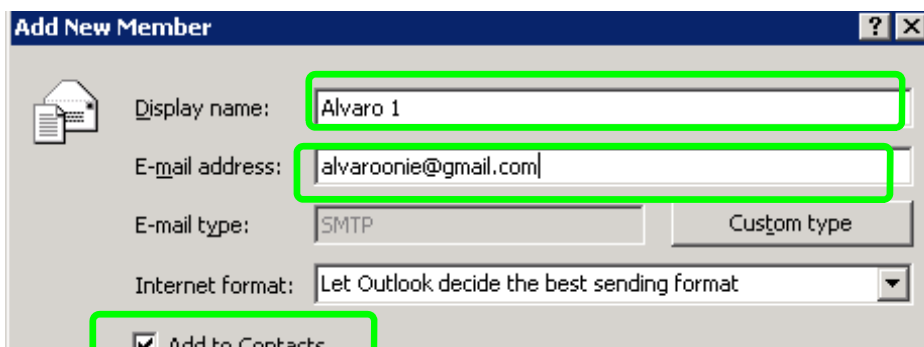


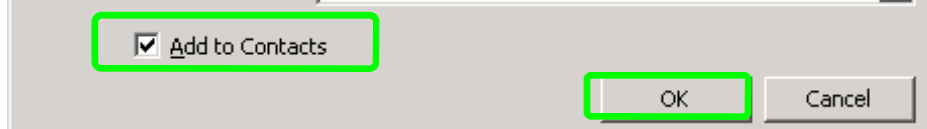
Now that your list is named, lets add the students.
Select Add New.



Insert Student's name and email address. Make sure to check the Add to Contacts box.
Select OK.

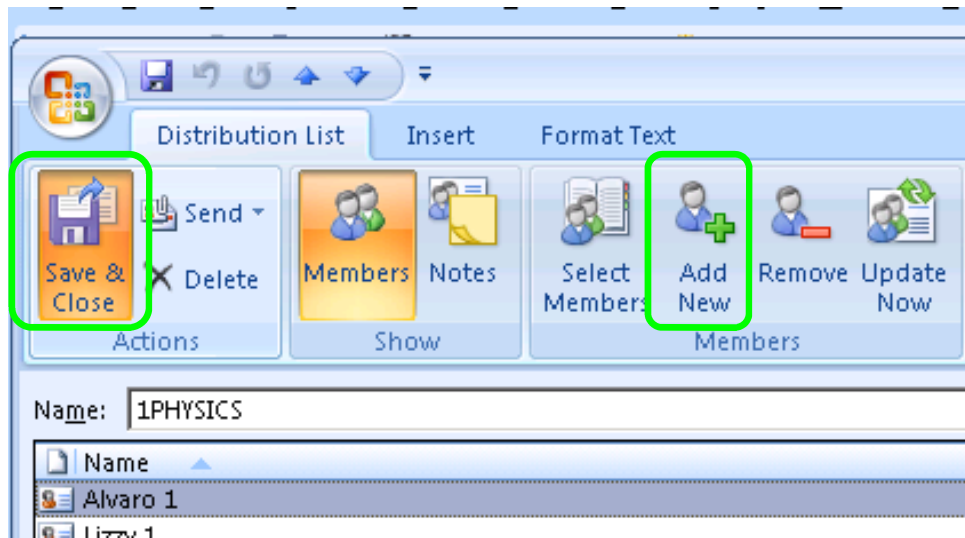
Adding the period number to the end of the display name will help you keep track of which student is which if you have several students with the same name.





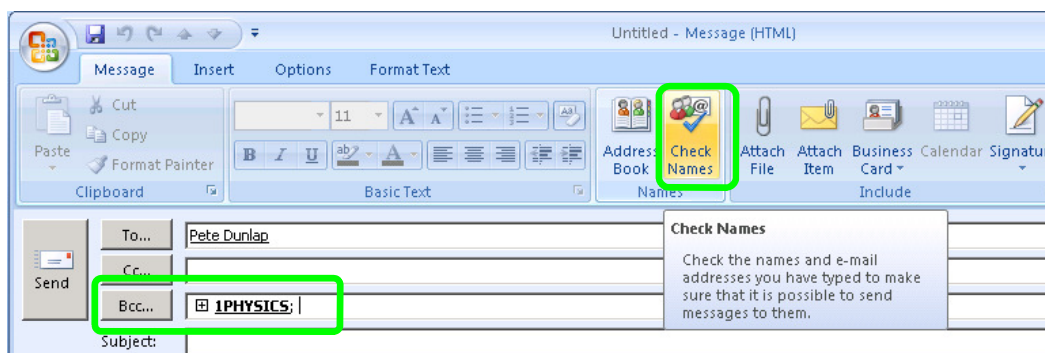
Select Add New again and complete the Add New Member Form again and again until all of your students in that class are listed.

Select Save and Close



Now the next time you want to send an email, just send the email to the name of your list. I recommend creating a distribution list for each of you classes.

The first time you type your list name you may need to select Check Names after typing the name.



Note: It is best practice to email groups using the BCC rather than the TO or CC. This prevents your students from getting other students' email addresses without permission. (If you do not see BCC as an option: Select Options Tab, Fields, Show BCC)

Show BCC)

TECH PRIZES! The first three people to reply to this email with screen grabs of their class distribution lists will win a dip in the prize sack!

Happy Trails!
-TechWize

PS If you are consistently confused by a tech problem email me your issue and it may be selected to be next week's Tech Tip!

